



LEGENDEX ROCK SLIDERS

PRODUCT CODE: P-RS-BT50-1

Isuzu Dmax 2021+ / Mazda BT50 2021+

PRODUCT CODE: P-RS-BT50-1



CHECK YOUR PACK LIST

Once you have unpacked the Rock Sliders from the box make sure you have all parts that are listed on the packing list below.

COMPONENTS

SLIDER PASSENGER SIDE x 1

SLIDER DRIVERS SIDE x 1

BOLTS x 6

TREAD PLATE x 4

TOOLS REQUIRED

- 19mm Spanners | Ratchet Spanner Ideal
- Bottle Jack | Trolley Jack Ideal
- Timber Block | Rubber Ideal
- Rubber Mallet
- Floor Mat
- Portable Light

IMPORTANT BEFORE INSTALLATION

- Before installing your sliders park your vehicle on level ground ensuring it is in gear (or Park) and the handbrake is applied. Never use a jack to support the weight of the vehicle while working on it.
- Wear protective clothing including eye wear listed on the packing list below.

REMOVING ORIGINAL SIDE STEPS

- **BEFORE YOU START – DOUBLE CHECK** – that you have the correct sliders for the job.
- Check the invoice and the packaging.
- Remove packaging: Check you have all the correct parts and no damage from freight.
- You might need to wash the underbody before starting the job.
- Generously spray the bolts with WD40 (or other spray lube) and leave to penetrate.
- Each 4wd is different so you'll need to identify the correct spanner size

INSTALLING YOUR NEW ROCK SLIDERS

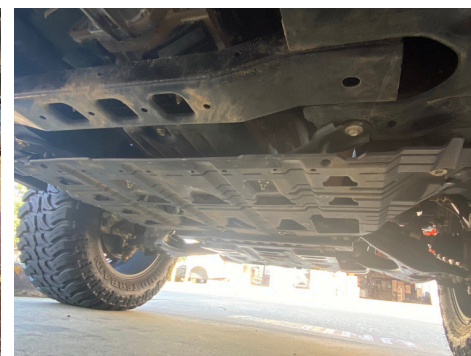
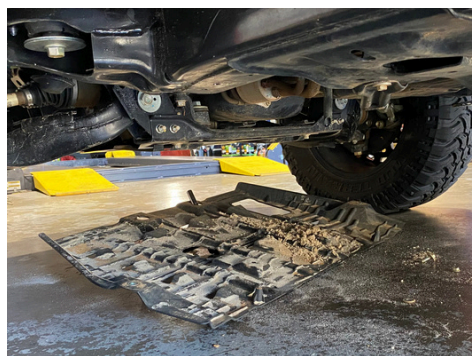
STEP 1

Unpack and remove the bolts attached to the mounting points and put these side.



STEP 2

Remove the Factory Bash Plate



INSTALLING YOUR NEW ROCK SLIDERS

PRODUCT CODE: P-RS-BT50-1

STEP 3

Start with the driver side and get a mate or a trolley jack to align the rock sliders, lift them up so the cup the chassis. Make sure the rear end of the slider is not up against the tyre.



STEP 4

Bolt up the first bracket - Up and over the chassis.



STEP 5

Next Bolt up the Rear bracket then the centre bracket - Up and over the chassis



INSTALLING YOUR NEW ROCK SLIDERS

PRODUCT CODE: P-RS-BT50-1

STEP 6

Now move into the passenger side and get a mate or a trolley jack to align the rock slider, Slowly lift the slider up as there are fuels + brake lines.



STEP 7

Lift up the sliders so they slide between the chassis and line. Then Bolt all the Brackets Up + Over the Chassis



STEP 5

Bolt the bash plate back into place



ONCE ROCK SLIDERS ARE INSTALLED

FINAL NOTES ONCE SLIDERS ARE FITTED

NOW THAT THE SLIDERS ARE FITTED TO YOUR VEHICLE:

- Double check all nuts and bolts are tight.
- Start the vehicle and listen for any vibration / rattle noises.
- Check the tread plate bolts are tight as well.
- Also re-check tightness of the bolts after 20-50km

WASHING AND RE-CHECKING

- DO wash after use – using a hose – NOT high-pressure cleaner
- IF you have damaged your coating in use- a high-pressure cleaner can/ will get underneath and lift the coating.
- If you notice any damage to the coating – respray with paint or underbody spray
- After every 4wd trip—re-tighten the bolts.
- After every 4wd trip—check the alignment of the slider.

NOTES



THANKS FOR CHOOSING A LEGENDEX PRODUCT

If you're on Facebook or Instagram we would love to show off your vehicle on our page. Simply tag us in a post with photos of your Legendex product using the tags below and we will feature your vehicle. @legendex on Facebook and Instagram